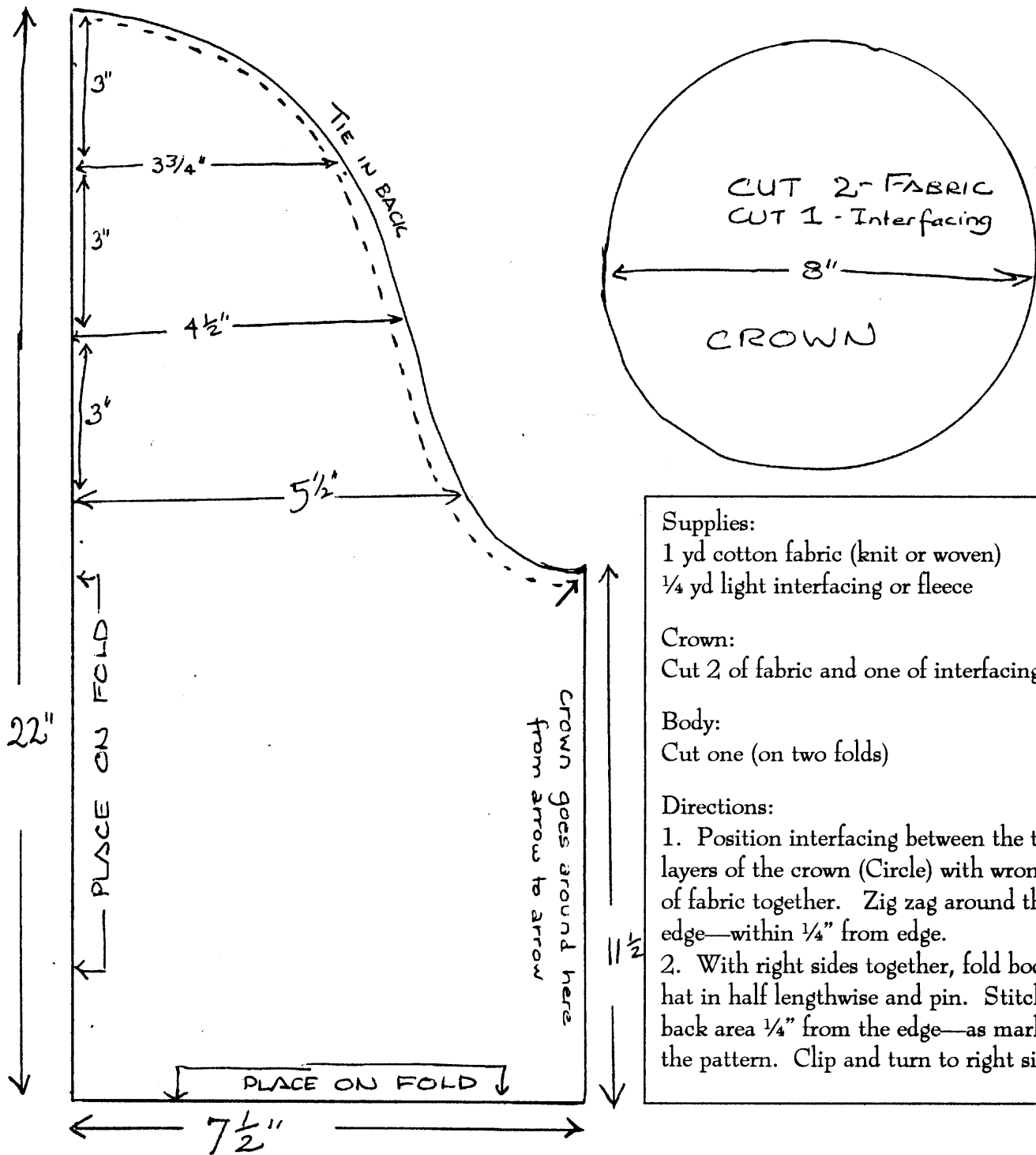


ADULT CHEMO HAT (Sent by Mary Beeuwaert of Roscommon, MI)

(Draw pattern pieces following the measurements provided below. This pattern was just too large to reprint.)



3. Quarter the crown circle and also the body piece that has not been sewn (11 1/2" side) and attach crown to the body with serger or zig-zag.
4. Fold up a brim—approximately 2 1/2" wide—around the face.
5. Put on hat and tie in back.

I hope that you will join Mary and her group and make these hats to donate to chemotherapy centers.